

SUPPLEMENTARY MATERIAL

How colorful are birds? Evolution of the avian plumage color gamut

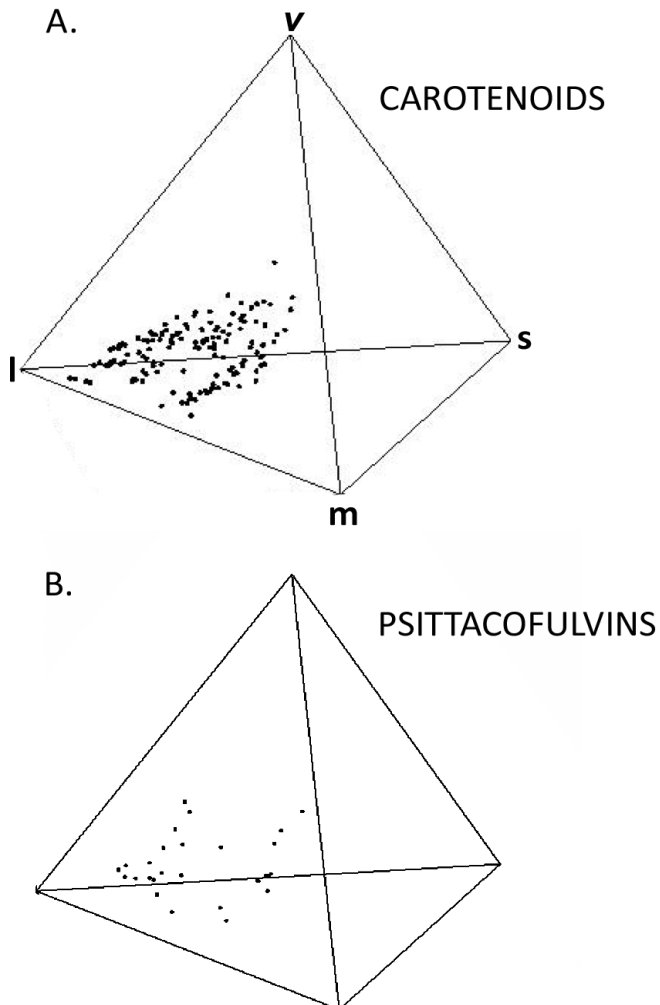
Mary Caswell Stoddard^{1*} and Richard O. Prum²

¹Department of Zoology, University of Cambridge, Downing Street, Cambridge CB2 3EJ, UK

²Department of Ecology and Evolutionary Biology and Peabody Museum of Natural History, Yale University, New Haven, Connecticut 06511, USA

*Author for correspondence: Mary Caswell Stoddard (mcs66@cam.ac.uk)

SM Figure 1. The gamut of **A)** carotenoid pigments and **B)** psittacofulvins. With psittacofulvins, parrots convergently evolved a distinct, alternative pigmentary mechanism for expanding their color gamut into the long-wavelength regions of the color space occupied by the carotenoid pigment gamut.



SM Table 1. Summary statistics describing the distribution of plumage colors for male representatives of 111 avian species from 55 families. Following Ödeen and Håstad (2003), we noted the known or presumed class of color vision (UVS or VS) possessed by each species and used the appropriate spectral sensitivity curves in the tetrachromatic analysis.

Species name	Family name	Type	Color span	Span variance	Max span	Color volume	Average hue disparity	Variance of hue disparity	Maximum hue disparity
<i>Acryllium vulturinum</i>	Numididae	VS	8.46E-02	4.92E-03	2.16E-01	1.71E-05	1.66E+00	8.11E-01	3.04E+00
<i>Agelaius phoeniceus</i>	Icteridae	UVS	3.54E-01	4.37E-02	5.51E-01	0.00E+00	8.18E-01	6.66E-02	1.08E+00
<i>Aix galericulata</i>	Anatidae	VS	1.44E-01	5.39E-03	3.35E-01	6.74E-04	1.23E+00	6.74E-01	2.87E+00
<i>Amazona albifrons</i>	Psittacidae	UVS	2.48E-01	2.35E-02	5.38E-01	6.51E-03	1.21E+00	6.92E-01	2.93E+00
<i>Anas clypeata</i>	Anatidae	VS	9.55E-02	2.22E-03	1.78E-01	2.60E-04	1.20E+00	6.90E-01	3.00E+00
<i>Ara chloropterus</i>	Psittacidae	UVS	2.78E-01	3.87E-02	5.65E-01	1.01E-03	1.18E+00	9.27E-01	2.72E+00
<i>Astrapia splendidissima</i>	Paradisaeidae	VS	1.63E-01	4.79E-03	2.18E-01	7.97E-06	1.89E+00	3.17E-01	2.52E+00
<i>Bubo scandiaca</i>	Strigidae	VS	3.39E-02	5.65E-04	8.17E-02	1.31E-06	2.40E-01	5.44E-02	6.92E-01
<i>Cacatua sulphurea</i>	Psittacidae	UVS	8.08E-02	4.21E-03	2.48E-01	3.47E-05	2.96E-01	3.71E-02	7.03E-01
<i>Caloenas nicobarica</i>	Columbidae	VS	1.31E-01	1.09E-02	3.09E-01	5.13E-04	1.41E+00	6.38E-01	3.00E+00
<i>Calypdomena viridis</i>	Eurylaimidae	VS	2.26E-01	2.29E-02	4.54E-01	3.15E-05	9.28E-01	6.54E-01	1.73E+00
<i>Cardinalis cardinalis</i>	Cardinalidae	UVS	2.00E-01	1.17E-02	3.76E-01	5.26E-05	2.62E-01	2.00E-02	4.57E-01
<i>Carduelis tristis</i>	Fringillidae	UVS	1.26E-01	8.19E-03	2.55E-01	2.82E-05	4.44E-01	1.37E-01	1.23E+00
<i>Carpodacus mexicanus</i>	Fringillidae	UVS	1.02E-01	4.37E-03	1.86E-01	4.97E-06	2.73E-01	4.78E-02	5.61E-01
<i>Ceyx lepidus</i>	Alcedinidae	VS	3.56E-01	3.68E-02	6.13E-01	1.31E-03	1.85E+00	1.55E+00	3.05E+00

Stoddard & Prum 2011 Supplement
Evolution of the avian plumage color gamut

<i>Ceyx pictus</i>	Alcedinidae	VS	3.29E-01	3.75E-02	6.54E-01	3.84E-04	1.49E+00	1.12E+00	2.84E+00
<i>Chalcopsitta atra</i>	Psittacidae	UVS	1.24E-01	8.98E-03	3.10E-01	5.76E-05	8.76E-01	2.77E-01	1.70E+00
<i>Chalcostigma herrani</i>	Trochilidae	VS	1.76E-01	6.23E-03	3.23E-01	5.60E-04	1.11E+00	3.22E-01	2.57E+00
<i>Charmosyna papou</i>	Psittacidae	UVS	3.35E-01	2.52E-02	6.93E-01	1.01E-02	1.19E+00	3.88E-01	2.04E+00
<i>Chlamydera nuchalis</i>	Ptilonorhynchidae	VS	7.09E-02	7.12E-03	2.56E-01	1.69E-05	7.57E-01	1.03E+00	2.75E+00
<i>Chrysococcyx klaas</i>	Cuculidae	VS	1.05E-01	5.27E-03	2.04E-01	7.57E-05	8.28E-01	2.18E-01	1.80E+00
<i>Circus cyaneus</i>	Accipitridae	VS	8.42E-02	2.07E-03	2.01E-01	8.49E-06	4.73E-01	1.26E-01	1.36E+00
<i>Claravis pretiosa</i>	Columbidae	VS	2.68E-02	1.92E-04	4.96E-02	1.03E-06	9.62E-01	4.95E-01	2.21E+00
<i>Coereba flaveola</i>	Coerebidae	UVS	1.09E-01	4.02E-03	2.04E-01	6.12E-05	6.57E-01	1.42E-01	1.42E+00
<i>Coracias caudatus</i>	Coraciidae	VS	1.71E-01	8.15E-03	3.95E-01	9.49E-04	1.63E+00	6.80E-01	3.07E+00
<i>Corvus brachyrhynchos</i>	Corvidae	VS	2.44E-02	4.77E-05	2.87E-02	0.00E+00	1.22E+00	1.56E-01	1.45E+00
<i>Corythaesola cristata</i>	Musophagidae	VS	1.11E-01	4.40E-03	2.42E-01	2.12E-04	1.56E+00	7.28E-01	3.13E+00
<i>Cotinga maynana</i>	Cotingidae	VS	1.34E-01	6.91E-03	2.44E-01	1.66E-04	1.35E+00	1.04E+00	2.86E+00
<i>Crax rubra</i>	Cracidae	VS	4.09E-02	0.00E+00	4.09E-02	0.00E+00	1.42E+00	0.00E+00	1.42E+00
<i>Cyanocitta cristata</i>	Corvidae	VS	9.25E-02	2.85E-03	2.04E-01	1.83E-05	1.64E+00	1.03E+00	3.04E+00
<i>Cyanocitta cristata (albino)</i>	Corvidae	VS	1.56E-02	8.08E-05	3.28E-02	6.36E-08	3.67E-01	1.30E-01	9.62E-01
<i>Cyanocopsa brissonii</i>	Cardinalidae	UVS	1.42E-01	6.65E-03	2.16E-01	8.10E-06	1.51E+00	1.06E+00	2.27E+00
<i>Cyanocopsa cyanoides</i>	Cardinalidae	UVS	5.63E-02	5.79E-04	8.78E-02	8.04E-06	2.03E+00	7.02E-01	2.79E+00
<i>Cyanocopsa parellina</i>	Cardinalidae	UVS	4.60E-02	3.31E-04	9.18E-02	1.99E-05	1.48E-01	9.14E-03	4.04E-01
<i>Cygnus olor</i>	Anatidae	VS	3.62E-02	6.85E-04	7.92E-02	3.89E-08	3.52E-01	3.98E-02	7.04E-01

Stoddard & Prum 2011 Supplement
Evolution of the avian plumage color gamut

<i>Cymbirhynchus macrorhynchus</i>	Eurylaimidae	VS	2.40E-01	2.33E-02	3.66E-01	4.13E-05	7.34E-01	2.46E-01	1.49E+00
<i>Dendroica petechia</i>	Parulidae	UVS	7.30E-02	2.20E-03	1.54E-01	2.50E-05	1.36E-01	7.63E-03	3.11E-01
<i>Dryocopus pileatus</i>	Picidae	VS	1.51E-01	1.48E-02	3.71E-01	7.73E-05	5.91E-01	8.00E-02	1.18E+00
<i>Erythrura gouldiae</i>	Estrildidae	UVS	2.84E-01	2.92E-02	6.09E-01	3.80E-03	1.61E+00	5.52E-01	2.79E+00
<i>Eudocimus ruber</i>	Threskiornithidae	VS	9.49E-02	2.74E-03	1.94E-01	1.79E-05	6.87E-02	1.70E-03	1.44E-01
<i>Euplectes orix</i>	Ploceidae	VS	3.98E-01	4.78E-02	6.05E-01	4.37E-05	4.04E-01	5.33E-02	5.67E-01
<i>Eupodotis senegalensis</i>	Otididae	VS	5.85E-02	1.68E-03	1.34E-01	4.30E-06	1.09E+00	6.70E-01	2.56E+00
<i>Eurylaimus ochromalus</i>	Eurylaimidae	VS	1.03E-01	2.99E-03	2.01E-01	3.83E-05	7.95E-01	1.82E-01	1.68E+00
<i>Fratercula arctica</i>	Alcidae	VS	4.44E-02	4.65E-04	1.04E-01	2.92E-06	5.43E-01	1.27E-01	1.37E+00
<i>Fregata magnificens</i>	Fregatidae	VS	3.23E-02	3.03E-04	6.26E-02	1.45E-06	5.38E-01	1.60E-01	1.34E+00
<i>Galbula cyanescens</i>	Galbulidae	VS	1.42E-01	5.25E-03	2.95E-01	2.96E-04	5.28E-01	1.07E-01	1.22E+00
<i>Halcyon senegalensis</i>	Alcedinidae	VS	9.28E-02	3.84E-03	1.96E-01	5.47E-05	1.41E+00	7.59E-01	3.06E+00
<i>Harpactes erythrocephalus</i>	Trogonidae	VS	1.79E-01	1.16E-02	3.55E-01	1.30E-04	7.38E-01	3.73E-01	2.34E+00
<i>Heliangelus clarisse</i>	Trochilidae	VS	1.29E-01	3.10E-03	2.52E-01	6.10E-04	7.23E-01	9.67E-02	1.45E+00
<i>Hirundo rustica</i>	Hirundinidae	UVS	1.58E-01	9.79E-03	3.39E-01	8.05E-05	1.69E+00	1.84E+00	2.94E+00
<i>Jacana spinosa</i>	Jacanidae	VS	1.36E-01	2.10E-03	1.90E-01	5.68E-06	6.18E-01	1.07E-01	1.14E+00
<i>Lagopus lagopus</i>	Phasianidae	VS	1.09E-01	5.25E-03	1.89E-01	3.74E-06	5.27E-01	1.53E-01	9.29E-01
<i>Larus argentatus</i>	Laridae	UVS	3.54E-02	7.24E-04	7.98E-02	2.37E-06	2.56E-01	8.97E-02	8.36E-01
<i>Larus marinus</i>	Laridae	UVS	6.19E-02	1.98E-03	1.35E-01	7.51E-06	2.62E-01	4.97E-02	6.03E-01
<i>Leiothrix argenteauris</i>	Timaliidae	UVS	2.06E-01	1.51E-02	4.34E-01	3.59E-04	4.05E-01	6.14E-02	1.18E+00

Stoddard & Prum 2011 Supplement
Evolution of the avian plumage color gamut

<i>Leptosomus discolor</i>	Leptosomidae	VS	7.50E-02	3.43E-03	1.73E-01	7.06E-05	1.64E+00	6.16E-01	2.91E+00
<i>Lophophorus impejanus</i>	Phasianidae	VS	2.18E-01	1.31E-02	4.97E-01	1.06E-03	1.27E+00	5.90E-01	3.02E+00
<i>Lophorina superba</i>	Paradisaeidae	VS	1.21E-01	4.56E-03	2.15E-01	2.89E-05	1.58E+00	9.12E-01	2.50E+00
<i>Loxia leucoptera</i>	Fringillidae	UVS	1.33E-01	6.52E-03	2.71E-01	7.59E-05	4.62E-01	1.24E-01	1.17E+00
<i>Luscinia calliope</i>	Muscicapidae	UVS	8.61E-02	2.77E-03	1.92E-01	3.95E-05	3.96E-01	7.00E-02	1.03E+00
<i>Malurus cyanocephalus</i>	Maluridae	VS	1.99E-01	1.33E-02	4.16E-01	2.25E-04	1.04E+00	6.62E-01	2.42E+00
<i>Malurus splendens</i>	Maluridae	VS	2.72E-01	2.11E-02	5.23E-01	8.64E-04	1.16E+00	7.24E-01	2.70E+00
<i>Megalaima chrysopogon</i>	Ramphastidae	VS	2.36E-01	1.51E-02	4.65E-01	1.77E-03	1.42E+00	9.43E-01	2.79E+00
<i>Momotus momota</i>	Momotidae	VS	2.06E-01	1.64E-02	5.48E-01	1.30E-03	1.35E+00	9.50E-01	2.93E+00
<i>Myophonus caeruleus</i>	Turdidae	UVS	5.72E-02	1.25E-03	1.77E-01	4.46E-05	1.14E-01	6.69E-03	3.16E-01
<i>Nettapus auritus</i>	Anatidae	VS	1.05E-01	4.04E-03	2.39E-01	2.85E-04	7.64E-01	1.88E-01	1.98E+00
<i>Nyctibius griseus</i>	Nyctibiidae	VS	6.85E-02	1.18E-03	1.37E-01	1.13E-05	5.02E-01	1.35E-01	1.28E+00
<i>Nyctyornis amictus</i>	Meropidae	VS	2.10E-01	1.46E-02	4.06E-01	1.09E-03	1.15E+00	6.67E-01	2.95E+00
<i>Oriolus xanthornus</i>	Oriolidae	UVS	1.70E-01	1.43E-02	3.56E-01	5.23E-05	3.04E-01	5.51E-02	5.91E-01
<i>Pagophila eburnea</i>	Laridae	UVS	2.36E-02	5.59E-04	6.49E-02	2.35E-07	2.99E-01	1.21E-01	8.94E-01
<i>Parus caeruleus</i>	Paridae	UVS	1.14E-01	4.45E-03	2.90E-01	9.01E-05	1.57E+00	1.03E+00	3.00E+00
<i>Passerina amoena</i>	Cardinalidae	UVS	1.65E-01	1.32E-02	3.96E-01	5.79E-06	1.12E+00	4.76E-01	2.22E+00
<i>Passerina caerulea</i>	Cardinalidae	UVS	2.55E-01	5.49E-02	5.89E-01	1.92E-04	1.28E+00	1.89E+00	2.92E+00
<i>Passerina ciris</i>	Cardinalidae	UVS	2.99E-01	2.72E-02	5.61E-01	2.09E-03	1.21E+00	5.92E-01	2.29E+00
<i>Passerina cyanea</i>	Cardinalidae	UVS	9.23E-02	2.24E-03	1.78E-01	2.50E-05	4.98E-01	6.75E-02	9.77E-01

Stoddard & Prum 2011 Supplement
Evolution of the avian plumage color gamut

<i>Passerina leclancherii</i>	Cardinalidae	UVS	2.78E-01	2.34E-02	5.23E-01	3.18E-04	1.30E+00	7.40E-01	2.50E+00
<i>Passerina rositae</i>	Cardinalidae	UVS	1.77E-01	1.38E-02	4.18E-01	3.21E-04	1.28E+00	1.32E+00	3.09E+00
<i>Passerina versicolor</i>	Cardinalidae	UVS	1.37E-01	3.39E-03	2.46E-01	2.09E-04	6.66E-01	1.54E-01	1.31E+00
<i>Phalacrocorax aristotelis</i>	Phalacrocoracidae	VS	6.28E-02	2.34E-04	8.16E-02	8.11E-06	1.04E+00	1.63E-01	1.59E+00
<i>Pharomachrus mocinno</i>	Trogonidae	VS	2.37E-01	1.57E-02	4.09E-01	1.89E-03	8.71E-01	2.33E-01	1.53E+00
<i>Phoenicopterus roseus</i>	Phoenicopteridae	VS	6.93E-02	6.98E-03	2.27E-01	8.20E-06	5.48E-01	2.72E-01	1.36E+00
<i>Phoenicopterus ruber</i>	Phoenicopteridae	VS	8.92E-02	4.10E-03	2.10E-01	1.89E-05	2.30E-01	3.10E-02	6.21E-01
<i>Picus viridis</i>	Picidae	VS	1.28E-01	8.01E-03	3.11E-01	2.63E-04	4.00E-01	8.11E-02	8.75E-01
<i>Pionus menstruus</i>	Psittacidae	UVS	2.14E-01	8.70E-03	4.29E-01	1.57E-03	1.62E+00	7.90E-01	3.00E+00
<i>Pipra erythrocephala</i>	Pipridae	VS	2.60E-01	2.25E-02	3.91E-01	1.85E-04	7.44E-01	5.61E-02	1.09E+00
<i>Piranga olivacea</i>	Cardinalidae	VS	2.07E-01	4.09E-02	4.76E-01	7.29E-05	3.88E-01	1.92E-01	1.28E+00
<i>Ploceus ocularis</i>	Ploceidae	UVS	1.51E-01	1.45E-02	3.93E-01	1.51E-04	2.76E-01	4.90E-02	6.50E-01
<i>Porphyrio martinica</i>	Rallidae	VS	1.67E-01	8.16E-03	3.52E-01	4.25E-04	1.67E+00	9.81E-01	2.90E+00
<i>Psophia leucoptera</i>	Psophiidae	VS	1.26E-01	6.59E-03	2.76E-01	8.07E-05	1.58E+00	5.65E-01	2.72E+00
<i>Ptilinopus jambu</i>	Columbidae	VS	1.66E-01	8.70E-03	3.41E-01	2.40E-04	9.61E-01	2.94E-01	1.80E+00
<i>Ptilinopus magnificus</i>	Columbidae	VS	1.61E-01	5.83E-03	3.01E-01	5.07E-04	7.49E-01	2.05E-01	1.47E+00
<i>Ptilinopus marchei</i>	Columbidae	VS	1.79E-01	1.67E-02	3.81E-01	5.69E-04	1.37E+00	6.14E-01	2.86E+00
<i>Rollulus rouloul</i>	Phasianidae	VS	8.84E-02	1.82E-03	1.49E-01	4.02E-06	1.40E+00	1.19E+00	2.93E+00
<i>Rupicola peruviana</i>	Cotingidae	VS	2.13E-01	4.84E-02	5.37E-01	3.48E-05	2.07E-01	4.70E-02	5.98E-01
<i>Rupicola rupicola</i>	Cotingidae	VS	1.57E-01	2.17E-02	3.82E-01	1.14E-04	2.19E-01	7.25E-02	7.64E-01

Stoddard & Prum 2011 Supplement
Evolution of the avian plumage color gamut

<i>Sericulus bakeri</i>	Ptilonorhynchidae	VS	3.16E-01	2.25E-02	5.50E-01	1.66E-04	5.21E-01	1.84E-02	6.51E-01
<i>Setophaga ruticilla</i>	Parulidae	UVS	1.45E-01	7.76E-03	3.18E-01	2.36E-04	6.03E-01	1.35E-01	1.20E+00
<i>Sialia sialis</i>	Turdidae	UVS	2.10E-01	2.00E-02	3.71E-01	1.83E-05	1.71E+00	1.42E+00	2.86E+00
<i>Somateria mollissima</i>	Anatidae	VS	6.33E-02	1.97E-03	1.40E-01	1.26E-06	9.54E-01	3.32E-01	1.63E+00
<i>Sterna hirundo</i>	Laridae	UVS	4.45E-02	6.58E-04	1.00E-01	9.48E-07	5.34E-01	2.99E-01	1.41E+00
<i>Sturnella militaris</i>	Icteridae	UVS	3.63E-01	3.21E-02	4.66E-01	9.04E-07	4.05E-01	4.17E-02	5.12E-01
<i>Sturnus vulgaris</i>	Sturnidae	UVS	1.07E-01	3.15E-03	2.36E-01	2.99E-04	1.45E+00	7.26E-01	2.86E+00
<i>Tangara chilensis</i>	Thraupidae	UVS	4.08E-01	5.72E-02	8.02E-01	9.17E-03	1.62E+00	7.78E-01	2.80E+00
<i>Tauraco hartlaubi</i>	Musophagidae	VS	1.47E-01	1.22E-02	3.20E-01	5.09E-04	1.30E+00	1.32E+00	3.07E+00
<i>Tersina viridis</i>	Thraupidae	UVS	9.28E-02	2.79E-03	1.83E-01	8.79E-05	1.22E+00	5.84E-01	2.84E+00
<i>Topaza pella</i>	Trochilidae	VS	2.10E-01	7.80E-03	3.44E-01	1.00E-04	4.49E-01	2.54E-02	6.02E-01
<i>Treron apicauda</i>	Columbidae	VS	9.68E-02	4.27E-03	2.49E-01	2.47E-05	5.54E-01	6.52E-01	2.19E+00
<i>Tichodroma muraria</i>	Sittidae	UVS	8.81E-02	6.49E-03	2.28E-01	3.77E-05	4.89E-01	2.36E-01	1.51E+00
<i>Trichoglossus rubritorquis</i>	Psittacidae	UVS	3.15E-01	2.64E-02	6.48E-01	3.95E-03	1.62E+00	9.24E-01	3.02E+00
<i>Tyto alba</i>	Tytonidae	VS	6.24E-02	1.16E-03	1.38E-01	7.57E-06	3.18E-01	3.93E-02	7.37E-01
<i>Uraeginthus ianthinogaster</i>	Estrildidae	UVS	3.02E-01	5.18E-02	5.16E-01	2.97E-04	1.62E+00	1.69E+00	2.86E+00
<i>Xipholena punicea</i>	Cotingidae	VS	7.71E-02	2.92E-03	2.29E-01	3.29E-05	4.20E-01	2.10E-01	1.51E+00

SM Table 2. Presumed mechanisms of all 965 plumage patches sampled. The abbreviations used for the different mechanisms are explained in the key below.

ABBREVIATION	MECHANISM	sb	structural barbule
co	carotenoid orange	sbe	structural barbule + eumelanin
cop	carotenoid orange + phaeomelanin	sbp	structural barbule + phaeomelanin
cp	carotenoid purple	sr	structural ramus
cr	carotenoid red	src	structural ramus + carotenoid
cre	carotenoid red + eumelanin	srp	structural ramus + carotenoid purple
crp	carotenoid red + phaeomelanin	srcr	structural ramus + carotenoid red
crw	carotenoid red + white	srcy	structural ramus + carotenoid yellow
cy	carotenoid yellow	sre	structural ramus + eumelanin
cyp	carotenoid yellow + phaeomelanin	srp	structural ramus + phaeomelanin
e	eumelanin	srps	structural ramus + psittacofulvin
ep	eumelanin + phaeomelanin	srw	structural ramus + white
ew	eumelanin + white	t	turacin
p	phaeomelanin	tv	turacoverdin
ps	psittacofulvin	u	unknown
pt	phaeomelanin + turacin	w	white
pw	phaeomelanin + white	sw	structural white

Stoddard & Prum 2011 Supplement
Evolution of the avian plumage color gamut

SPECIES NAME	PATCH	PRESUMED MECHANISM
<i>Acryllium vulturinum</i>	back	e
<i>Acryllium vulturinum</i>	back	sr
<i>Acryllium vulturinum</i>	back	w
<i>Acryllium vulturinum</i>	belly	e
<i>Acryllium vulturinum</i>	belly	sr
<i>Acryllium vulturinum</i>	breast/ throat	e
<i>Acryllium vulturinum</i>	breast/ throat	w
<i>Acryllium vulturinum</i>	crown	e
<i>Acryllium vulturinum</i>	rump	e
<i>Acryllium vulturinum</i>	side/back	sr
<i>Agelaius phoeniceus</i>	back	e
<i>Agelaius phoeniceus</i>	belly	e
<i>Agelaius phoeniceus</i>	breast	e
<i>Agelaius phoeniceus</i>	coverts	p
<i>Agelaius phoeniceus</i>	crown	e
<i>Agelaius phoeniceus</i>	epaulet	cre
<i>Agelaius phoeniceus</i>	rump	e
<i>Agelaius phoeniceus</i>	throat	e
<i>Aix galericulata</i>	back	p
<i>Aix galericulata</i>	belly	w
<i>Aix galericulata</i>	belly/side	pw
<i>Aix galericulata</i>	breast	sb
<i>Aix galericulata</i>	crown	p
<i>Aix galericulata</i>	crown	sb
<i>Aix galericulata</i>	crown	w
<i>Aix galericulata</i>	nape	sb

<i>Aix galericulata</i>	rump	p
<i>Aix galericulata</i>	throat	p
<i>Aix galericulata</i>	wing	e
<i>Aix galericulata</i>	wing	sb
<i>Aix galericulata</i>	wing	sb
<i>Amazona albifrons</i>	back	srps
<i>Amazona albifrons</i>	belly	srps
<i>Amazona albifrons</i>	breast	srps
<i>Amazona albifrons</i>	cheek	ps
<i>Amazona albifrons</i>	crown	sr
<i>Amazona albifrons</i>	crown	srps
<i>Amazona albifrons</i>	crown	w
<i>Amazona albifrons</i>	rump	srps
<i>Amazona albifrons</i>	side	ps
<i>Amazona albifrons</i>	side	sr
<i>Amazona albifrons</i>	tail	ps
<i>Amazona albifrons</i>	tail	srps
<i>Amazona albifrons</i>	throat	srps
<i>Anas clypeata</i>	back	e
<i>Anas clypeata</i>	belly	p
<i>Anas clypeata</i>	belly	w
<i>Anas clypeata</i>	crown	e
<i>Anas clypeata</i>	rump	w
<i>Anas clypeata</i>	wing	sb
<i>Anas clypeata</i>	wing	sr
<i>Anas clypeata</i>	wing	w
<i>Ara chloropterus</i>	back	ps
<i>Ara chloropterus</i>	belly	ps
<i>Ara chloropterus</i>	breast	ps

Stoddard & Prum 2011 Supplement
Evolution of the avian plumage color gamut

<i>Ara chloropterus</i>	crown	ps
<i>Ara chloropterus</i>	rump	sr
<i>Ara chloropterus</i>	tail	ps
<i>Ara chloropterus</i>	tail	sr
<i>Ara chloropterus</i>	throat	ps
<i>Ara chloropterus</i>	wing	sr
<i>Ara chloropterus</i>	wing	srps
<i>Astrapia splendidissima</i>	back	sb
<i>Astrapia splendidissima</i>	belly	sb
<i>Astrapia splendidissima</i>	belly	e
<i>Astrapia splendidissima</i>	breast	sb
<i>Astrapia splendidissima</i>	cheek	sb
<i>Astrapia splendidissima</i>	collar	e
<i>Astrapia splendidissima</i>	crown	sb
<i>Astrapia splendidissima</i>	rump	e
<i>Astrapia splendidissima</i>	tail	p
<i>Astrapia splendidissima</i>	tail	w
<i>Astrapia splendidissima</i>	throat	sb
<i>Bubo scandiaca</i>	back	p
<i>Bubo scandiaca</i>	back	w
<i>Bubo scandiaca</i>	belly	p
<i>Bubo scandiaca</i>	belly	w
<i>Bubo scandiaca</i>	breast	w
<i>Bubo scandiaca</i>	crown	w
<i>Bubo scandiaca</i>	face	p
<i>Bubo scandiaca</i>	rump	w
<i>Bubo scandiaca</i>	throat	w
<i>Cacatua sulphurea</i>	back	w
<i>Cacatua sulphurea</i>	belly	ps

<i>Cacatua sulphurea</i>	belly	w
<i>Cacatua sulphurea</i>	breast	ps
<i>Cacatua sulphurea</i>	breast	w
<i>Cacatua sulphurea</i>	cheek	ps
<i>Cacatua sulphurea</i>	crest	ps
<i>Cacatua sulphurea</i>	crest	ps
<i>Cacatua sulphurea</i>	crown	w
<i>Cacatua sulphurea</i>	rump	w
<i>Cacatua sulphurea</i>	tail	ps
<i>Cacatua sulphurea</i>	throat	w
<i>Caloenas nicobarica</i>	back	sb
<i>Caloenas nicobarica</i>	back	sb
<i>Caloenas nicobarica</i>	belly	sb
<i>Caloenas nicobarica</i>	breast	sb
<i>Caloenas nicobarica</i>	crown	e
<i>Caloenas nicobarica</i>	rump	sb
<i>Caloenas nicobarica</i>	rump	w
<i>Caloenas nicobarica</i>	throat	e
<i>Caloenas nicobarica</i>	wing	sb
<i>Calyptomena viridis</i>	back	src
<i>Calyptomena viridis</i>	belly	src
<i>Calyptomena viridis</i>	breast	src
<i>Calyptomena viridis</i>	cheek	e
<i>Calyptomena viridis</i>	crown	src
<i>Calyptomena viridis</i>	rump	src
<i>Calyptomena viridis</i>	throat	src
<i>Calyptomena viridis</i>	wing	e
<i>Calyptomena viridis</i>	wing	e
<i>Cardinalis cardinalis</i>	back	cre

Stoddard & Prum 2011 Supplement
Evolution of the avian plumage color gamut

<i>Cardinalis cardinalis</i>	belly	cr
<i>Cardinalis cardinalis</i>	breast	cr
<i>Cardinalis cardinalis</i>	crown	cr
<i>Cardinalis cardinalis</i>	forecrown	e
<i>Cardinalis cardinalis</i>	rump	cre
<i>Cardinalis cardinalis</i>	throat	e
<i>Carduelis tristis</i>	back	cy
<i>Carduelis tristis</i>	belly	cy
<i>Carduelis tristis</i>	breast	cy
<i>Carduelis tristis</i>	crown	cy
<i>Carduelis tristis</i>	crown	e
<i>Carduelis tristis</i>	rump	cy
<i>Carduelis tristis</i>	tail	w
<i>Carduelis tristis</i>	throat	cy
<i>Carduelis tristis</i>	wing	e
<i>Carpodacus mexicanus</i>	back	p
<i>Carpodacus mexicanus</i>	belly	p
<i>Carpodacus mexicanus</i>	breast	crp
<i>Carpodacus mexicanus</i>	crown	crp
<i>Carpodacus mexicanus</i>	rump	crp
<i>Carpodacus mexicanus</i>	throat	crp
<i>Ceyx lepidus</i>	back	sr
<i>Ceyx lepidus</i>	belly	p
<i>Ceyx lepidus</i>	breast	cyp
<i>Ceyx lepidus</i>	crown	sr
<i>Ceyx lepidus</i>	rump	sr
<i>Ceyx lepidus</i>	throat	w
<i>Ceyx pictus</i>	back	sr
<i>Ceyx pictus</i>	belly	p

<i>Ceyx pictus</i>	breast	p
<i>Ceyx pictus</i>	cheek	sr
<i>Ceyx pictus</i>	crown	p
<i>Ceyx pictus</i>	crown	sr
<i>Ceyx pictus</i>	rump	sr
<i>Ceyx pictus</i>	throat	w
<i>Chalcopsitta atra</i>	back	e
<i>Chalcopsitta atra</i>	belly	e
<i>Chalcopsitta atra</i>	breast	e
<i>Chalcopsitta atra</i>	crown	e
<i>Chalcopsitta atra</i>	rump	sre
<i>Chalcopsitta atra</i>	tail	ps
<i>Chalcopsitta atra</i>	tail	ps
<i>Chalcopsitta atra</i>	throat	e
<i>Chalcostigma herrani</i>	back	sb
<i>Chalcostigma herrani</i>	belly	p
<i>Chalcostigma herrani</i>	breast	sb
<i>Chalcostigma herrani</i>	crown	p
<i>Chalcostigma herrani</i>	rump	sb
<i>Chalcostigma herrani</i>	tail	sb
<i>Chalcostigma herrani</i>	tail	w
<i>Chalcostigma herrani</i>	throat	sb
<i>Charmosyna papou</i>	back	ps
<i>Charmosyna papou</i>	back	srps
<i>Charmosyna papou</i>	belly	sr
<i>Charmosyna papou</i>	breast	ps
<i>Charmosyna papou</i>	crown	e
<i>Charmosyna papou</i>	crown	ps
<i>Charmosyna papou</i>	crown	sr

Stoddard & Prum 2011 Supplement
Evolution of the avian plumage color gamut

<i>Charmosyna papou</i>	rump	e
<i>Charmosyna papou</i>	rump	ps
<i>Charmosyna papou</i>	rump	sr
<i>Charmosyna papou</i>	tail	ps
<i>Charmosyna papou</i>	tail	srps
<i>Charmosyna papou</i>	throat	ps
<i>Chlamydera nuchalis</i>	back	p
<i>Chlamydera nuchalis</i>	back	p
<i>Chlamydera nuchalis</i>	belly	p
<i>Chlamydera nuchalis</i>	breast	p
<i>Chlamydera nuchalis</i>	collar	src
<i>Chlamydera nuchalis</i>	crown	p
<i>Chlamydera nuchalis</i>	rump	p
<i>Chlamydera nuchalis</i>	throat	p
<i>Chlamydera nuchalis</i>	wing	p
<i>Chrysococcyx klaas</i>	back	sb
<i>Chrysococcyx klaas</i>	belly	w
<i>Chrysococcyx klaas</i>	breast	w
<i>Chrysococcyx klaas</i>	crown	sb
<i>Chrysococcyx klaas</i>	crown	w
<i>Chrysococcyx klaas</i>	rump	sb
<i>Chrysococcyx klaas</i>	tail	sb
<i>Chrysococcyx klaas</i>	throat	w
<i>Circus cyaneus</i>	back	e
<i>Circus cyaneus</i>	belly	p
<i>Circus cyaneus</i>	breast	p
<i>Circus cyaneus</i>	crown	p
<i>Circus cyaneus</i>	nape	w
<i>Circus cyaneus</i>	rump	w

<i>Circus cyaneus</i>	throat	ep
<i>Claravis pretiosa</i>	back	e
<i>Claravis pretiosa</i>	belly	e
<i>Claravis pretiosa</i>	breast	e
<i>Claravis pretiosa</i>	crown	e
<i>Claravis pretiosa</i>	rump	e
<i>Claravis pretiosa</i>	throat	w
<i>Claravis pretiosa</i>	wing	e
<i>Claravis pretiosa</i>	wing	e
<i>Coereba flaveola</i>	back	e
<i>Coereba flaveola</i>	belly	cy
<i>Coereba flaveola</i>	breast	cy
<i>Coereba flaveola</i>	crown	e
<i>Coereba flaveola</i>	face	w
<i>Coereba flaveola</i>	rump	cy
<i>Coereba flaveola</i>	throat	w
<i>Coereba flaveola</i>	wing	w
<i>Coracias caudatus</i>	back	p
<i>Coracias caudatus</i>	belly	sr
<i>Coracias caudatus</i>	belly	sr
<i>Coracias caudatus</i>	breast	sr
<i>Coracias caudatus</i>	coverts	sr
<i>Coracias caudatus</i>	coverts	sr
<i>Coracias caudatus</i>	crown	sr
<i>Coracias caudatus</i>	face	p
<i>Coracias caudatus</i>	rump	sr
<i>Coracias caudatus</i>	tail	e
<i>Coracias caudatus</i>	throat	w
<i>Coracias caudatus</i>	wing	sr

Stoddard & Prum 2011 Supplement
Evolution of the avian plumage color gamut

<i>Coracias caudatus</i>	wing	sr
<i>Corvus brachyrhynchos</i>	back	e
<i>Corvus brachyrhynchos</i>	belly	e
<i>Corvus brachyrhynchos</i>	breast	e
<i>Corvus brachyrhynchos</i>	crown	e
<i>Corvus brachyrhynchos</i>	rump	e
<i>Corvus brachyrhynchos</i>	throat	e
<i>Corythaeola cristata</i>	back	sb
<i>Corythaeola cristata</i>	belly	p
<i>Corythaeola cristata</i>	belly	tv
<i>Corythaeola cristata</i>	breast	sb
<i>Corythaeola cristata</i>	crest	e
<i>Corythaeola cristata</i>	crown	e
<i>Corythaeola cristata</i>	rump	sb
<i>Corythaeola cristata</i>	rump	sb
<i>Corythaeola cristata</i>	tail	e
<i>Corythaeola cristata</i>	tail	tv
<i>Corythaeola cristata</i>	throat	sb
<i>Cotinga maynana</i>	back	srcp
<i>Cotinga maynana</i>	belly	cp
<i>Cotinga maynana</i>	belly	srcp
<i>Cotinga maynana</i>	breast	srcp
<i>Cotinga maynana</i>	crown	srcp
<i>Cotinga maynana</i>	rump	srcp
<i>Cotinga maynana</i>	throat	cp
<i>Cotinga maynana</i>	throat	cp
<i>Cotinga maynana</i>	wing	e
<i>Crax rubra</i>	back	e
<i>Crax rubra</i>	belly	w

<i>Crax rubra</i>	breast	e
<i>Crax rubra</i>	crown	e
<i>Crax rubra</i>	rump	ep
<i>Crax rubra</i>	throat	e
<i>Cyanocitta cristata</i>	back	sr
<i>Cyanocitta cristata</i>	belly	w
<i>Cyanocitta cristata</i>	breast	w
<i>Cyanocitta cristata</i>	collar	e
<i>Cyanocitta cristata</i>	crown	sr
<i>Cyanocitta cristata</i>	rump	sr
<i>Cyanocitta cristata</i>	tail	sr
<i>Cyanocitta cristata</i>	throat	w
<i>Cyanocitta cristata</i>	wing	e
<i>Cyanocitta cristata</i>	wing	sr
<i>Cyanocitta cristata</i>	wing	sw
<i>Cyanocitta cristata albino</i>	back	w
<i>Cyanocitta cristata albino</i>	belly	w
<i>Cyanocitta cristata albino</i>	breast	w
<i>Cyanocitta cristata albino</i>	crown	sw
<i>Cyanocitta cristata albino</i>	rump	sw
<i>Cyanocitta cristata albino</i>	throat	w
<i>Cyanocompsa brissonii</i>	back	e
<i>Cyanocompsa brissonii</i>	belly	e
<i>Cyanocompsa brissonii</i>	breast	e
<i>Cyanocompsa brissonii</i>	cheek	sr
<i>Cyanocompsa brissonii</i>	crown	sr
<i>Cyanocompsa brissonii</i>	epaulet	sr
<i>Cyanocompsa brissonii</i>	forecrown	sr
<i>Cyanocompsa brissonii</i>	rump	sr

Stoddard & Prum 2011 Supplement
Evolution of the avian plumage color gamut

<i>Cyanocompsa brissonii</i>	throat	e
<i>Cyanocompsa cyanoides</i>	back	e
<i>Cyanocompsa cyanoides</i>	belly	e
<i>Cyanocompsa cyanoides</i>	breast	e
<i>Cyanocompsa cyanoides</i>	cheek	sr
<i>Cyanocompsa cyanoides</i>	crown	e
<i>Cyanocompsa cyanoides</i>	epaulet	sr
<i>Cyanocompsa cyanoides</i>	forecrown	sr
<i>Cyanocompsa cyanoides</i>	rump	sr
<i>Cyanocompsa cyanoides</i>	throat	e
<i>Cyanocompsa parellina</i>	back	sr
<i>Cyanocompsa parellina</i>	belly	sr
<i>Cyanocompsa parellina</i>	breast	sr
<i>Cyanocompsa parellina</i>	cheek	sr
<i>Cyanocompsa parellina</i>	crown	sr
<i>Cyanocompsa parellina</i>	epaulet	sr
<i>Cyanocompsa parellina</i>	forecrown	sr
<i>Cyanocompsa parellina</i>	rump	sr
<i>Cyanocompsa parellina</i>	throat	sr
<i>Cygnus olor</i>	back	w
<i>Cygnus olor</i>	belly	w
<i>Cygnus olor</i>	breast	w
<i>Cygnus olor</i>	crown	w
<i>Cygnus olor</i>	rump	w
<i>Cygnus olor</i>	throat	w
<i>Cymbirhynchus macrorhynchos</i>	back	e
<i>Cymbirhynchus macrorhynchos</i>	belly	cp
<i>Cymbirhynchus macrorhynchos</i>	breast	e
<i>Cymbirhynchus macrorhynchos</i>	cheek/ throat	cp

<i>Cymbirhynchus macrorhynchos</i>	coverts	w
<i>Cymbirhynchus macrorhynchos</i>	crown	e
<i>Cymbirhynchus macrorhynchos</i>	rump	cp
<i>Dendroica petechia</i>	back	srcey
<i>Dendroica petechia</i>	belly	cy
<i>Dendroica petechia</i>	breast	cyp
<i>Dendroica petechia</i>	breast	p
<i>Dendroica petechia</i>	crown	srcey
<i>Dendroica petechia</i>	rump	srcey
<i>Dendroica petechia</i>	throat	cy
<i>Dryocopus pileatus</i>	back	e
<i>Dryocopus pileatus</i>	belly	e
<i>Dryocopus pileatus</i>	breast	e
<i>Dryocopus pileatus</i>	cheek	cr
<i>Dryocopus pileatus</i>	crown	cr
<i>Dryocopus pileatus</i>	face	e
<i>Dryocopus pileatus</i>	face	w
<i>Dryocopus pileatus</i>	rump	e
<i>Dryocopus pileatus</i>	throat	e
<i>Erythrura gouldiae</i>	back	src
<i>Erythrura gouldiae</i>	belly	cy
<i>Erythrura gouldiae</i>	breast	sr
<i>Erythrura gouldiae</i>	collar	sr
<i>Erythrura gouldiae</i>	crown	cr
<i>Erythrura gouldiae</i>	rump	sr
<i>Erythrura gouldiae</i>	tail	w
<i>Erythrura gouldiae</i>	throat	e
<i>Eudocimus ruber</i>	back	cr
<i>Eudocimus ruber</i>	belly	cr

Stoddard & Prum 2011 Supplement
Evolution of the avian plumage color gamut

<i>Eudocimus ruber</i>	breast	cr
<i>Eudocimus ruber</i>	crown	cr
<i>Eudocimus ruber</i>	rump	cr
<i>Eudocimus ruber</i>	throat	cr
<i>Euplectes orix</i>	back	cr
<i>Euplectes orix</i>	back	cr
<i>Euplectes orix</i>	belly	e
<i>Euplectes orix</i>	breast	cr
<i>Euplectes orix</i>	crown	e
<i>Euplectes orix</i>	rump	cr
<i>Euplectes orix</i>	throat	e
<i>Eupodotis senegalensis</i>	back	p
<i>Eupodotis senegalensis</i>	belly	w
<i>Eupodotis senegalensis</i>	breast	e
<i>Eupodotis senegalensis</i>	crown	e
<i>Eupodotis senegalensis</i>	crown	e
<i>Eupodotis senegalensis</i>	nape	e
<i>Eupodotis senegalensis</i>	rump	p
<i>Eupodotis senegalensis</i>	throat	e
<i>Eupodotis senegalensis</i>	wing	e
<i>Eurylaimus ochromalus</i>	back	cy
<i>Eurylaimus ochromalus</i>	back	e
<i>Eurylaimus ochromalus</i>	back	w
<i>Eurylaimus ochromalus</i>	belly	cr
<i>Eurylaimus ochromalus</i>	belly	cy
<i>Eurylaimus ochromalus</i>	breast	cr
<i>Eurylaimus ochromalus</i>	crown	e
<i>Eurylaimus ochromalus</i>	rump	cy
<i>Eurylaimus ochromalus</i>	throat	e

<i>Eurylaimus ochromalus</i>	throat	w
<i>Fratercula arctica</i>	back	e
<i>Fratercula arctica</i>	belly	w
<i>Fratercula arctica</i>	breast	w
<i>Fratercula arctica</i>	crown	e
<i>Fratercula arctica</i>	face	w
<i>Fratercula arctica</i>	rump	e
<i>Fratercula arctica</i>	throat	e
<i>Fratercula arctica</i>	wing	e
<i>Fregata magnificens</i>	back	e
<i>Fregata magnificens</i>	belly	p
<i>Fregata magnificens</i>	belly	w
<i>Fregata magnificens</i>	breast	w
<i>Fregata magnificens</i>	crown	w
<i>Fregata magnificens</i>	rump	e
<i>Fregata magnificens</i>	side	p
<i>Fregata magnificens</i>	throat	w
<i>Galbula cyanescens</i>	back	sb
<i>Galbula cyanescens</i>	belly	p
<i>Galbula cyanescens</i>	breast	sb
<i>Galbula cyanescens</i>	crown	sb
<i>Galbula cyanescens</i>	rump	sb
<i>Galbula cyanescens</i>	throat	sb
<i>Halcyon senegalensis</i>	back	sr
<i>Halcyon senegalensis</i>	belly	w
<i>Halcyon senegalensis</i>	breast	sr
<i>Halcyon senegalensis</i>	coverts	e
<i>Halcyon senegalensis</i>	crown	sr
<i>Halcyon senegalensis</i>	rump	sr

Stoddard & Prum 2011 Supplement
Evolution of the avian plumage color gamut

<i>Halcyon senegalensis</i>	throat	w
<i>Halcyon senegalensis</i>	wing	e
<i>Halcyon senegalensis</i>	wing	sr
<i>Harpactes erythrocephalus</i>	back	e
<i>Harpactes erythrocephalus</i>	back	p
<i>Harpactes erythrocephalus</i>	belly	cr
<i>Harpactes erythrocephalus</i>	breast	cr
<i>Harpactes erythrocephalus</i>	coverts	ew
<i>Harpactes erythrocephalus</i>	crown	cr
<i>Harpactes erythrocephalus</i>	forecrown	cre
<i>Harpactes erythrocephalus</i>	rump	p
<i>Harpactes erythrocephalus</i>	tail	w
<i>Harpactes erythrocephalus</i>	throat	cre
<i>Harpactes erythrocephalus</i>	wing	e
<i>Heliangelus clarisse</i>	back	sb
<i>Heliangelus clarisse</i>	belly	p
<i>Heliangelus clarisse</i>	belly	sb
<i>Heliangelus clarisse</i>	belly	sbe
<i>Heliangelus clarisse</i>	breast	w
<i>Heliangelus clarisse</i>	crown	sb
<i>Heliangelus clarisse</i>	rump	sb
<i>Heliangelus clarisse</i>	throat	sb
<i>Hirundo rustica</i>	back	sb
<i>Hirundo rustica</i>	belly	w
<i>Hirundo rustica</i>	breast	sb
<i>Hirundo rustica</i>	collar	w
<i>Hirundo rustica</i>	crown	sb
<i>Hirundo rustica</i>	crown	sb
<i>Hirundo rustica</i>	rump	sb

<i>Hirundo rustica</i>	throat	p
<i>Jacana spinosa</i>	back	e
<i>Jacana spinosa</i>	back	p
<i>Jacana spinosa</i>	belly	p
<i>Jacana spinosa</i>	breast	p
<i>Jacana spinosa</i>	crown	e
<i>Jacana spinosa</i>	rump	p
<i>Jacana spinosa</i>	side	tv
<i>Jacana spinosa</i>	throat	e
<i>Lagopus lagopus</i>	back	w
<i>Lagopus lagopus</i>	belly	w
<i>Lagopus lagopus</i>	breast	p
<i>Lagopus lagopus</i>	crown	p
<i>Lagopus lagopus</i>	rump	w
<i>Lagopus lagopus</i>	throat	p
<i>Larus argentatus</i>	back	e
<i>Larus argentatus</i>	back	e
<i>Larus argentatus</i>	belly	w
<i>Larus argentatus</i>	breast	w
<i>Larus argentatus</i>	crown	w
<i>Larus argentatus</i>	rump	w
<i>Larus argentatus</i>	throat	w
<i>Larus argentatus</i>	wing	e
<i>Larus marinus</i>	back	e
<i>Larus marinus</i>	back	e
<i>Larus marinus</i>	belly	w
<i>Larus marinus</i>	breast	w
<i>Larus marinus</i>	crown	w
<i>Larus marinus</i>	rump	w

Stoddard & Prum 2011 Supplement
Evolution of the avian plumage color gamut

<i>Larus marinus</i>	throat	w
<i>Larus marinus</i>	wing	e
<i>Leiothrix argentauris</i>	back	cop
<i>Leiothrix argentauris</i>	back	e
<i>Leiothrix argentauris</i>	belly	e
<i>Leiothrix argentauris</i>	breast	cop
<i>Leiothrix argentauris</i>	cheek	p
<i>Leiothrix argentauris</i>	crown	e
<i>Leiothrix argentauris</i>	rump	cr
<i>Leiothrix argentauris</i>	throat	cop
<i>Leiothrix argentauris</i>	wing	cop
<i>Leiothrix argentauris</i>	wing	cr
<i>Leptosomus discolor</i>	back	e
<i>Leptosomus discolor</i>	back	sb
<i>Leptosomus discolor</i>	belly	e
<i>Leptosomus discolor</i>	breast	e
<i>Leptosomus discolor</i>	collar	e
<i>Leptosomus discolor</i>	crown	e
<i>Leptosomus discolor</i>	throat	e
<i>Leptosomus discolor</i>	wing	sb
<i>Lophophorus impejanus</i>	back	sb
<i>Lophophorus impejanus</i>	back	sb
<i>Lophophorus impejanus</i>	belly	e
<i>Lophophorus impejanus</i>	chest	e
<i>Lophophorus impejanus</i>	crown	sb
<i>Lophophorus impejanus</i>	crown	sb
<i>Lophophorus impejanus</i>	nape	sb
<i>Lophophorus impejanus</i>	rump	sb
<i>Lophophorus impejanus</i>	side	sb

<i>Lophophorus impejanus</i>	tail	sb
<i>Lophophorus impejanus</i>	throat	sb
<i>Lophorina superba</i>	back	e
<i>Lophorina superba</i>	belly	e
<i>Lophorina superba</i>	breast	sb
<i>Lophorina superba</i>	crest	e
<i>Lophorina superba</i>	crown	sb
<i>Lophorina superba</i>	rump	e
<i>Lophorina superba</i>	throat	e
<i>Loxia leucoptera</i>	back	cr
<i>Loxia leucoptera</i>	back	e
<i>Loxia leucoptera</i>	belly	cr
<i>Loxia leucoptera</i>	belly	e
<i>Loxia leucoptera</i>	breast	cr
<i>Loxia leucoptera</i>	collar	e
<i>Loxia leucoptera</i>	crown	cr
<i>Loxia leucoptera</i>	rump	cr
<i>Loxia leucoptera</i>	throat	cr
<i>Loxia leucoptera</i>	wing	e
<i>Loxia leucoptera</i>	wing	w
<i>Luscinia calliope</i>	back	p
<i>Luscinia calliope</i>	belly	w
<i>Luscinia calliope</i>	breast	p
<i>Luscinia calliope</i>	cheek	w
<i>Luscinia calliope</i>	crown	p
<i>Luscinia calliope</i>	rump	p
<i>Luscinia calliope</i>	throat	cr
<i>Malurus cyanocephalus</i>	back	sr
<i>Malurus cyanocephalus</i>	belly	sr

Stoddard & Prum 2011 Supplement
Evolution of the avian plumage color gamut

<i>Malurus cyanocephalus</i>	breast	sr
<i>Malurus cyanocephalus</i>	crown	e
<i>Malurus cyanocephalus</i>	crown	sr
<i>Malurus cyanocephalus</i>	rump	e
<i>Malurus cyanocephalus</i>	throat	sr
<i>Malurus splendens</i>	back	sr
<i>Malurus splendens</i>	belly	sr
<i>Malurus splendens</i>	breast	e
<i>Malurus splendens</i>	cheek	sr
<i>Malurus splendens</i>	collar	e
<i>Malurus splendens</i>	crown	sr
<i>Malurus splendens</i>	rump	sr
<i>Malurus splendens</i>	throat	sr
<i>Malurus splendens</i>	wing	sr
<i>Megalaima chrysopogon</i>	back	src
<i>Megalaima chrysopogon</i>	belly	src
<i>Megalaima chrysopogon</i>	breast	sr
<i>Megalaima chrysopogon</i>	cheek	cy
<i>Megalaima chrysopogon</i>	crown	cr
<i>Megalaima chrysopogon</i>	crown	cy
<i>Megalaima chrysopogon</i>	crown	sr
<i>Megalaima chrysopogon</i>	rump	src
<i>Megalaima chrysopogon</i>	throat	e
<i>Momotus momota</i>	back	srp
<i>Momotus momota</i>	belly	p
<i>Momotus momota</i>	breast	e
<i>Momotus momota</i>	breast	srp
<i>Momotus momota</i>	crown	e
<i>Momotus momota</i>	crown	sr

<i>Momotus momota</i>	forecrown	sr
<i>Momotus momota</i>	rump	srp
<i>Momotus momota</i>	tail	sr
<i>Momotus momota</i>	tail	sr
<i>Momotus momota</i>	tail	p
<i>Momotus momota</i>	throat	srp
<i>Myophonus caeruleus</i>	back	e
<i>Myophonus caeruleus</i>	back	sr
<i>Myophonus caeruleus</i>	belly	e
<i>Myophonus caeruleus</i>	belly	sr
<i>Myophonus caeruleus</i>	breast	e
<i>Myophonus caeruleus</i>	breast	sr
<i>Myophonus caeruleus</i>	coverts	srw
<i>Myophonus caeruleus</i>	crown	e
<i>Myophonus caeruleus</i>	crown	sr
<i>Myophonus caeruleus</i>	rump	sr
<i>Myophonus caeruleus</i>	tail	sr
<i>Myophonus caeruleus</i>	throat	e
<i>Myophonus caeruleus</i>	throat	sr
<i>Myophonus caeruleus</i>	wing	sr
<i>Nettapus auritus</i>	back	sb
<i>Nettapus auritus</i>	belly	w
<i>Nettapus auritus</i>	breast	p
<i>Nettapus auritus</i>	collar	sbp
<i>Nettapus auritus</i>	crown	e
<i>Nettapus auritus</i>	crown	sb
<i>Nettapus auritus</i>	crown	tv
<i>Nettapus auritus</i>	crown	w
<i>Nettapus auritus</i>	rump	sb

Stoddard & Prum 2011 Supplement
Evolution of the avian plumage color gamut

<i>Nettapus auritus</i>	side	p
<i>Nettapus auritus</i>	throat	w
<i>Nyctibius griseus</i>	back	e
<i>Nyctibius griseus</i>	back	w
<i>Nyctibius griseus</i>	belly	e
<i>Nyctibius griseus</i>	breast	e
<i>Nyctibius griseus</i>	crown	e
<i>Nyctibius griseus</i>	rump	e
<i>Nyctibius griseus</i>	throat	w
<i>Nyctyornis amictus</i>	back	src
<i>Nyctyornis amictus</i>	belly	src
<i>Nyctyornis amictus</i>	belly	src
<i>Nyctyornis amictus</i>	breast	cr
<i>Nyctyornis amictus</i>	crown	src
<i>Nyctyornis amictus</i>	rump	src
<i>Nyctyornis amictus</i>	tail	src
<i>Nyctyornis amictus</i>	tail	cy
<i>Nyctyornis amictus</i>	tail	e
<i>Nyctyornis amictus</i>	throat	cr
<i>Oriolus xanthornus</i>	back	cy
<i>Oriolus xanthornus</i>	belly	cy
<i>Oriolus xanthornus</i>	breast	cy
<i>Oriolus xanthornus</i>	crown	e
<i>Oriolus xanthornus</i>	rump	cy
<i>Oriolus xanthornus</i>	tail	cy
<i>Oriolus xanthornus</i>	throat	e
<i>Oriolus xanthornus</i>	wing tip	cy
<i>Pagophila eburnea</i>	back	w
<i>Pagophila eburnea</i>	belly	w

<i>Pagophila eburnea</i>	breast	w
<i>Pagophila eburnea</i>	crown	w
<i>Pagophila eburnea</i>	rump	w
<i>Pagophila eburnea</i>	tail	p
<i>Pagophila eburnea</i>	throat	ew
<i>Parus caeruleus</i>	back	src
<i>Parus caeruleus</i>	belly	cy
<i>Parus caeruleus</i>	belly	sr
<i>Parus caeruleus</i>	breast	cy
<i>Parus caeruleus</i>	cheek	w
<i>Parus caeruleus</i>	collar	sr
<i>Parus caeruleus</i>	crown	sr
<i>Parus caeruleus</i>	rump	src
<i>Parus caeruleus</i>	tail	sr
<i>Parus caeruleus</i>	throat	sr
<i>Parus caeruleus</i>	wing	sr
<i>Passerina amoena</i>	back	sr
<i>Passerina amoena</i>	belly	w
<i>Passerina amoena</i>	breast	p
<i>Passerina amoena</i>	crown	sr
<i>Passerina amoena</i>	rump	sr
<i>Passerina amoena</i>	throat	sr
<i>Passerina amoena</i>	wing bar	w
<i>Passerina caerulea</i>	back	sr
<i>Passerina caerulea</i>	belly	sr
<i>Passerina caerulea</i>	breast	sr
<i>Passerina caerulea</i>	crown	sr
<i>Passerina caerulea</i>	epaulet	p
<i>Passerina caerulea</i>	rump	sr

Stoddard & Prum 2011 Supplement
Evolution of the avian plumage color gamut

<i>Passerina caerulea</i>	throat	sr
<i>Passerina caerulea</i>	wing bar	p
<i>Passerina ciris</i>	back	src
<i>Passerina ciris</i>	belly	cr
<i>Passerina ciris</i>	breast	cr
<i>Passerina ciris</i>	crown	sr
<i>Passerina ciris</i>	rump	cr
<i>Passerina ciris</i>	throat	cr
<i>Passerina cyanea</i>	back	sr
<i>Passerina cyanea</i>	belly	sr
<i>Passerina cyanea</i>	breast	sr
<i>Passerina cyanea</i>	crown	sr
<i>Passerina cyanea</i>	rump	sr
<i>Passerina cyanea</i>	throat	sr
<i>Passerina leclancherii</i>	back	src
<i>Passerina leclancherii</i>	belly	cy
<i>Passerina leclancherii</i>	breast	co
<i>Passerina leclancherii</i>	crown	sr
<i>Passerina leclancherii</i>	nape	sr
<i>Passerina leclancherii</i>	rump	sr
<i>Passerina leclancherii</i>	throat	co
<i>Passerina rositae</i>	back	sr
<i>Passerina rositae</i>	belly	srcr
<i>Passerina rositae</i>	belly	crw
<i>Passerina rositae</i>	breast	srcr
<i>Passerina rositae</i>	crown	sr
<i>Passerina rositae</i>	nape	sr
<i>Passerina rositae</i>	rump	sr
<i>Passerina rositae</i>	throat	sr

<i>Passerina versicolor</i>	back	srcr
<i>Passerina versicolor</i>	belly	srcr
<i>Passerina versicolor</i>	breast	sr
<i>Passerina versicolor</i>	crown	srcr
<i>Passerina versicolor</i>	forecrown	sr
<i>Passerina versicolor</i>	rump	sr
<i>Passerina versicolor</i>	throat	srcr
<i>Phalacrocorax aristotelis</i>	back	e
<i>Phalacrocorax aristotelis</i>	belly	e
<i>Phalacrocorax aristotelis</i>	breast	e
<i>Phalacrocorax aristotelis</i>	crest	e
<i>Phalacrocorax aristotelis</i>	crown	e
<i>Phalacrocorax aristotelis</i>	rump	sb
<i>Phalacrocorax aristotelis</i>	throat	e
<i>Pharomachus mocinno</i>	back	e
<i>Pharomachus mocinno</i>	back	sb
<i>Pharomachus mocinno</i>	belly	cr
<i>Pharomachus mocinno</i>	breast	cr
<i>Pharomachus mocinno</i>	crown	sb
<i>Pharomachus mocinno</i>	rump	sb
<i>Pharomachus mocinno</i>	tail	sb
<i>Pharomachus mocinno</i>	tail	w
<i>Pharomachus mocinno</i>	throat	sb
<i>Pharomachus mocinno</i>	wing	e
<i>Phoenicopterus roseus</i>	back	w
<i>Phoenicopterus roseus</i>	belly	w
<i>Phoenicopterus roseus</i>	breast	w
<i>Phoenicopterus roseus</i>	crown	cr
<i>Phoenicopterus roseus</i>	rump	w

Stoddard & Prum 2011 Supplement
Evolution of the avian plumage color gamut

<i>Phoenicopterus roseus</i>	throat	w
<i>Phoenicopterus roseus</i>	wing	cr
<i>Phoenicopterus roseus</i>	wing	e
<i>Phoenicopterus ruber</i>	back	crw
<i>Phoenicopterus ruber</i>	belly	cr
<i>Phoenicopterus ruber</i>	breast	cr
<i>Phoenicopterus ruber</i>	crown	cr
<i>Phoenicopterus ruber</i>	rump	crw
<i>Phoenicopterus ruber</i>	throat	cr
<i>Phoenicopterus ruber</i>	wing	e
<i>Picus viridis</i>	back	srcy
<i>Picus viridis</i>	belly	cy
<i>Picus viridis</i>	breast	cy
<i>Picus viridis</i>	cheek	cr
<i>Picus viridis</i>	crown	cr
<i>Picus viridis</i>	crown	e
<i>Picus viridis</i>	rump	cy
<i>Picus viridis</i>	tail	e
<i>Picus viridis</i>	tail	w
<i>Picus viridis</i>	throat	w
<i>Pionus menstruus</i>	back	srps
<i>Pionus menstruus</i>	belly	srps
<i>Pionus menstruus</i>	breast	sr
<i>Pionus menstruus</i>	cheek	e
<i>Pionus menstruus</i>	coverts	srps
<i>Pionus menstruus</i>	crown	sr
<i>Pionus menstruus</i>	rump	srps
<i>Pionus menstruus</i>	tail	ps
<i>Pionus menstruus</i>	throat	ps

<i>Pipra erythrocephala</i>	back	e
<i>Pipra erythrocephala</i>	belly	e
<i>Pipra erythrocephala</i>	breast	e
<i>Pipra erythrocephala</i>	crown	cy
<i>Pipra erythrocephala</i>	flank	cr
<i>Pipra erythrocephala</i>	flank	w
<i>Pipra erythrocephala</i>	rump	e
<i>Pipra erythrocephala</i>	throat	e
<i>Piranga olivacea</i>	back	cr
<i>Piranga olivacea</i>	belly	cr
<i>Piranga olivacea</i>	breast	cr
<i>Piranga olivacea</i>	crown	cr
<i>Piranga olivacea</i>	rump	cr
<i>Piranga olivacea</i>	throat	cr
<i>Piranga olivacea</i>	wing	w
<i>Piranga olivacea</i>	wing	e
<i>Ploceus ocularis</i>	back	srey
<i>Ploceus ocularis</i>	belly	cy
<i>Ploceus ocularis</i>	breast	cop
<i>Ploceus ocularis</i>	collar	cy
<i>Ploceus ocularis</i>	crown	cop
<i>Ploceus ocularis</i>	rump	srey
<i>Ploceus ocularis</i>	throat	cop
<i>Ploceus ocularis</i>	throat	e
<i>Porphyrio martinica</i>	back	sr
<i>Porphyrio martinica</i>	back	src
<i>Porphyrio martinica</i>	belly	sr
<i>Porphyrio martinica</i>	breast	sr
<i>Porphyrio martinica</i>	crown	sr

Stoddard & Prum 2011 Supplement
Evolution of the avian plumage color gamut

<i>Porphyrio martinica</i>	rump	src
<i>Porphyrio martinica</i>	rump	w
<i>Porphyrio martinica</i>	side	sr
<i>Porphyrio martinica</i>	throat	sr
<i>Psophia leucoptera</i>	back	e
<i>Psophia leucoptera</i>	back	w
<i>Psophia leucoptera</i>	belly	e
<i>Psophia leucoptera</i>	breast	sb
<i>Psophia leucoptera</i>	crown	e
<i>Psophia leucoptera</i>	rump	e
<i>Psophia leucoptera</i>	side	sb
<i>Psophia leucoptera</i>	throat	e
<i>Ptilinopus jambu</i>	back	sb
<i>Ptilinopus jambu</i>	belly	w
<i>Ptilinopus jambu</i>	breast	cr
<i>Ptilinopus jambu</i>	cheek	cr
<i>Ptilinopus jambu</i>	collar	w
<i>Ptilinopus jambu</i>	crown	cr
<i>Ptilinopus jambu</i>	rump	sb
<i>Ptilinopus magnificus</i>	back	cy
<i>Ptilinopus magnificus</i>	back	sb
<i>Ptilinopus magnificus</i>	belly	cp
<i>Ptilinopus magnificus</i>	belly	cy
<i>Ptilinopus magnificus</i>	breast	cp
<i>Ptilinopus magnificus</i>	crown	e
<i>Ptilinopus magnificus</i>	crown	sb
<i>Ptilinopus magnificus</i>	rump	sb
<i>Ptilinopus magnificus</i>	throat	cp
<i>Ptilinopus marchei</i>	back	e

<i>Ptilinopus marchei</i>	belly	e
<i>Ptilinopus marchei</i>	belly	w
<i>Ptilinopus marchei</i>	breast	co
<i>Ptilinopus marchei</i>	breast	cr
<i>Ptilinopus marchei</i>	crown	cr
<i>Ptilinopus marchei</i>	crown	e
<i>Ptilinopus marchei</i>	rump	sb
<i>Ptilinopus marchei</i>	side	sb
<i>Ptilinopus marchei</i>	throat	e
<i>Ptilinopus marchei</i>	wing	cr
<i>Rollulus rouloul</i>	back	tv
<i>Rollulus rouloul</i>	belly	p
<i>Rollulus rouloul</i>	breast	e
<i>Rollulus rouloul</i>	crown	e
<i>Rollulus rouloul</i>	crown	pt
<i>Rollulus rouloul</i>	rump	tv
<i>Rollulus rouloul</i>	side	p
<i>Rollulus rouloul</i>	throat	e
<i>Rupicola peruviana</i>	back	co
<i>Rupicola peruviana</i>	belly	co
<i>Rupicola peruviana</i>	breast	co
<i>Rupicola peruviana</i>	crest	co
<i>Rupicola peruviana</i>	crown	co
<i>Rupicola peruviana</i>	rump	co
<i>Rupicola peruviana</i>	throat	co
<i>Rupicola peruviana</i>	wing	e
<i>Rupicola peruviana</i>	wing	e
<i>Rupicola rupicola</i>	back	co
<i>Rupicola rupicola</i>	belly	co

Stoddard & Prum 2011 Supplement
Evolution of the avian plumage color gamut

<i>Rupicola rupicola</i>	breast	co
<i>Rupicola rupicola</i>	crest	co
<i>Rupicola rupicola</i>	crown	co
<i>Rupicola rupicola</i>	rump	co
<i>Rupicola rupicola</i>	throat	co
<i>Rupicola rupicola</i>	wing	p
<i>Rupicola rupicola</i>	wing	p
<i>Rupicola rupicola</i>	wing tip	co
<i>Sericulus bakeri</i>	back	co
<i>Sericulus bakeri</i>	back	e
<i>Sericulus bakeri</i>	belly	e
<i>Sericulus bakeri</i>	breast	e
<i>Sericulus bakeri</i>	crown	cr
<i>Sericulus bakeri</i>	rump	e
<i>Sericulus bakeri</i>	throat	e
<i>Sericulus bakeri</i>	wing	cy
<i>Sericulus bakeri</i>	wing	cy
<i>Setophaga ruticilla</i>	back	e
<i>Setophaga ruticilla</i>	belly	w
<i>Setophaga ruticilla</i>	breast	co
<i>Setophaga ruticilla</i>	breast	e
<i>Setophaga ruticilla</i>	crown	e
<i>Setophaga ruticilla</i>	rump	e
<i>Setophaga ruticilla</i>	tail	co
<i>Setophaga ruticilla</i>	throat	e
<i>Setophaga ruticilla</i>	wing	co
<i>Setophaga ruticilla</i>	wing	e
<i>Sialia sialis</i>	back	sr
<i>Sialia sialis</i>	belly	w

<i>Sialia sialis</i>	breast	p
<i>Sialia sialis</i>	crown	sr
<i>Sialia sialis</i>	rump	sr
<i>Sialia sialis</i>	throat	p
<i>Somateria mollissima</i>	back	w
<i>Somateria mollissima</i>	belly	e
<i>Somateria mollissima</i>	breast	w
<i>Somateria mollissima</i>	crown	e
<i>Somateria mollissima</i>	crown	u
<i>Somateria mollissima</i>	crown	w
<i>Somateria mollissima</i>	rump	e
<i>Somateria mollissima</i>	throat	w
<i>Sterna hirundo</i>	back	e
<i>Sterna hirundo</i>	belly	e
<i>Sterna hirundo</i>	breast	e
<i>Sterna hirundo</i>	crown	e
<i>Sterna hirundo</i>	rump	w
<i>Sterna hirundo</i>	throat	w
<i>Sturnella militaris</i>	back	e
<i>Sturnella militaris</i>	belly	cr
<i>Sturnella militaris</i>	belly	e
<i>Sturnella militaris</i>	breast	cr
<i>Sturnella militaris</i>	crown	e
<i>Sturnella militaris</i>	rump	e
<i>Sturnella militaris</i>	throat	cr
<i>Sturnus vulgaris</i>	back	p
<i>Sturnus vulgaris</i>	back	sb
<i>Sturnus vulgaris</i>	back	sb
<i>Sturnus vulgaris</i>	belly	sb

Stoddard & Prum 2011 Supplement
Evolution of the avian plumage color gamut

<i>Sturnus vulgaris</i>	belly	w
<i>Sturnus vulgaris</i>	breast	sb
<i>Sturnus vulgaris</i>	breast	w
<i>Sturnus vulgaris</i>	crown	e
<i>Sturnus vulgaris</i>	crown	sb
<i>Sturnus vulgaris</i>	rump	sb
<i>Sturnus vulgaris</i>	throat	sb
<i>Tangara chilensis</i>	back	cr
<i>Tangara chilensis</i>	back	e
<i>Tangara chilensis</i>	belly	sr
<i>Tangara chilensis</i>	breast	sr
<i>Tangara chilensis</i>	coverts	sr
<i>Tangara chilensis</i>	crown	src
<i>Tangara chilensis</i>	rump	cy
<i>Tangara chilensis</i>	throat	sr
<i>Tangara chilensis</i>	wing	sr
<i>Tauraco hartlaubi</i>	back	sr
<i>Tauraco hartlaubi</i>	back	tv
<i>Tauraco hartlaubi</i>	belly	sr
<i>Tauraco hartlaubi</i>	belly	tv
<i>Tauraco hartlaubi</i>	breast	tv
<i>Tauraco hartlaubi</i>	crown	sr
<i>Tauraco hartlaubi</i>	crown	w
<i>Tauraco hartlaubi</i>	crown	w
<i>Tauraco hartlaubi</i>	rump	p
<i>Tauraco hartlaubi</i>	throat	tv
<i>Tauraco hartlaubi</i>	wing	t
<i>Tersina viridis</i>	back	sr
<i>Tersina viridis</i>	belly	sr

<i>Tersina viridis</i>	belly	w
<i>Tersina viridis</i>	breast	sr
<i>Tersina viridis</i>	crown	sr
<i>Tersina viridis</i>	forecrown	e
<i>Tersina viridis</i>	rump	sr
<i>Tersina viridis</i>	throat	e
<i>Tersina viridis</i>	wing	e
<i>Tichodroma muraria</i>	back	e
<i>Tichodroma muraria</i>	belly	e
<i>Tichodroma muraria</i>	belly	w
<i>Tichodroma muraria</i>	breast	e
<i>Tichodroma muraria</i>	crown	e
<i>Tichodroma muraria</i>	rump	e
<i>Tichodroma muraria</i>	throat	w
<i>Tichodroma muraria</i>	wing	cr
<i>Topaza pella</i>	back	sb
<i>Topaza pella</i>	belly	sb
<i>Topaza pella</i>	belly	sb
<i>Topaza pella</i>	breast	e
<i>Topaza pella</i>	crown	e
<i>Topaza pella</i>	rump	sb
<i>Topaza pella</i>	rump	sb
<i>Topaza pella</i>	tail	e
<i>Topaza pella</i>	throat	sb
<i>Treron apicauda</i>	back	sb
<i>Treron apicauda</i>	back	w
<i>Treron apicauda</i>	belly	sb
<i>Treron apicauda</i>	breast	sbp
<i>Treron apicauda</i>	crown	sb

Stoddard & Prum 2011 Supplement
Evolution of the avian plumage color gamut

<i>Treron apicauda</i>	rump	sb
<i>Treron apicauda</i>	throat	sb
<i>Treron apicauda</i>	wing	cy
<i>Treron apicauda</i>	wing	e
<i>Trichoglossus rubritorquis</i>	back	srps
<i>Trichoglossus rubritorquis</i>	belly	e
<i>Trichoglossus rubritorquis</i>	belly	ps
<i>Trichoglossus rubritorquis</i>	belly	srps
<i>Trichoglossus rubritorquis</i>	breast	ps
<i>Trichoglossus rubritorquis</i>	collar	ps
<i>Trichoglossus rubritorquis</i>	collar	sr
<i>Trichoglossus rubritorquis</i>	crown	sr
<i>Trichoglossus rubritorquis</i>	rump	srps
<i>Trichoglossus rubritorquis</i>	throat	e
<i>Tyto alba</i>	back	p
<i>Tyto alba</i>	back	p
<i>Tyto alba</i>	belly	pw
<i>Tyto alba</i>	breast	w
<i>Tyto alba</i>	collar	p
<i>Tyto alba</i>	crown	w
<i>Tyto alba</i>	face	pw
<i>Tyto alba</i>	rump	p
<i>Tyto alba</i>	throat	w
<i>Uraeginthus ianthinogaster</i>	back	p
<i>Uraeginthus ianthinogaster</i>	belly	sr
<i>Uraeginthus ianthinogaster</i>	breast	p
<i>Uraeginthus ianthinogaster</i>	cheek	sr
<i>Uraeginthus ianthinogaster</i>	crown	p
<i>Uraeginthus ianthinogaster</i>	rump	sr

<i>Uraeginthus ianthinogaster</i>	throat	p
<i>Xipholena punicea</i>	back	cp
<i>Xipholena punicea</i>	belly	cp
<i>Xipholena punicea</i>	breast	cp
<i>Xipholena punicea</i>	coverts	cp
<i>Xipholena punicea</i>	crown	cp
<i>Xipholena punicea</i>	rump	cp
<i>Xipholena punicea</i>	tail	cp
<i>Xipholena punicea</i>	throat	cp
<i>Xipholena punicea</i>	wing	cp
<i>Xipholena punicea</i>	wing	w